



< 5061 >  
HEDLER Profilux® LED<sup>1400</sup> DMX



< 5060 >  
HEDLER Profilux® LED<sup>1400</sup>

*Handmade in Germany*

HEDLER Profilux® LED<sup>1400</sup> and HEDLER Profilux® LED<sup>1400</sup> DMX operation manual.  
Please, read the following technical information and the HEDLER safety instructions carefully before using the light unit.

### TECHNICAL DESCRIPTION

Light units of the HEDLER Profilux® LED range are designed for professional use, they are assembled by applying precision methods and tested individually for function and quality. The focusable daylight HEDLER Profilux® LED<sup>1400</sup> light unit as well as the daylight HEDLER Profilux® LED<sup>1400</sup>DMX light unit is provided with an integrated U-bracket and a friction brake and a 5/8" Quick-Lock light stand attachment. After loosening the hex key screws by approx. 2 turns, the U-bracket can be moved back and forth in its keyway for gravity adjustment and it is turnable for right and left hand use.

The light units of the HEDLER Profilux® LED range are designed for AC use from 110 - 230 V (with automatic mains voltage recognition) and 50/60 Hz and are equipped with a LED Softstart feature. They use one 185 W highpower single cell LED and generate a flicker-free light with approx. 5600 K and a CRI > 95. They have an extremely quiet cooling. It can be used in automatic mode or can be switched manually to 100%. Besides they are equipped with a special active LED fan cooling and an integrated safety switch-off.

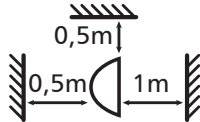
At the front side the aluminium housing holds a Fresnel lens and the QuickFit adapter for a quick and easy compatibility of all HEDLER lightformers. Interchangeable reflectors with bayonet ring can be attached in the following way: Interchangeable reflectors with bayonet ring can be attached in the following way: place the rim of the ring into the guide grooves of the upper studs and the round opening over the coneshaped bolt, and lock it by a turn to the left. To attach the rotatable 4-Leaf barndoors or a MaxiSoft folding reflector, place the rim of the ring into the guide grooves of the upper studs, and then push the complete reflector towards the QuickFit's cone-shaped bolt until the ring locks in the bolt's groove. Detach the reflector by lifting the QuickFit's handle, moving the lower side of the reflector away from the light unit's housing, and then lifting the reflector's ring out of the guide grooves of the upper studs.

The focusing option of the light units HEDLER Profilux® LED<sup>1400</sup> and HEDLER Profilux® LED<sup>1400</sup> DMX allows to adjust the light beam from spot up to flood light characteristic. Simply turn the focusing knob located at the back of the housing and the size of the light beams diameter can be adjusted precisely to your lighting needs or ideas - intuitively.

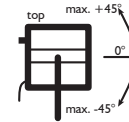
# OPERATION MANUAL

## TECHNICAL DATA Profilux® LED<sup>1400</sup>

Type: Profilux® LED <sup>1400</sup>	Voltage: 110 - 230 V ~ 1,0A 50/60 Hz	Power: 185 W LED	Risk group: 0-RG
Color: CRI > 95	Kelvin: 5600K	Safety class system: I	Protection category: IP30
Weight: 3600g	Ambient temperature (Ta): -15° - +40° C	Surface temperature: 85°C	
Light stand attachment: 5/8"	Fresnel lens code: < 6507 >	Light unit code: < 5060 >	



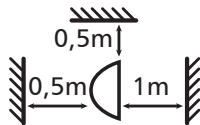
**Safety clearance:**  
Under any circumstances do not under-run the safety clearances given within the graphic to inflammable material!



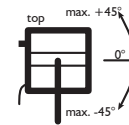
**Position:**  
Tilt light unit max. 45° upwards/downwards in operation!

## TECHNICAL DATA Profilux® LED<sup>1400</sup> DMX

Type: Profilux® LED <sup>1400</sup> DMX	Voltage: 110 - 230 V ~ 1,0A 50/60 Hz	Power: 185 W LED	Risk group: 0-RG
Color: CRI > 95	Kelvin: 5600K	Safety class system: I	Protection category: IP30
Weight: 3600g	Ambient temperature (Ta): -15° - +40° C	Surface temperature: 85°C	
Light stand attachment: 5/8"	Fresnel lens code: < 6507 >	Light unit code: < 5061 >	



**Safety clearance:**  
Under any circumstances do not under-run the safety clearances given within the graphic to inflammable material!



**Position:**  
Tilt light unit max. 45° upwards/downwards in operation!

## KEY BUTTONS

On the back of the light units of the HEDLER Profilux® LED range there are several key buttons. By pressing them the indicated functions will be switched alternately.

### Fan 100% / Automatic

100% - the fan cooling of the light units of the HEDLER Profilux® LED range will be set to full power irrespective of the operating temperature;  
Automatic - the power of the fan cooling will be regulated as a function of the operating temperature.

### Dimmer OFF / ON

OFF - the continuous light output power is set to maximum (100%), the setting of the rotary potentiometer will be ignored;  
ON - dimming function is available by turning the rotary potentiometer.

### POWER OFF / ON

OFF - light unit will be switched off or rather into stand-by-mode (if the light unit has to be currentless you have to disconnect the light unit from the electric power supply);  
ON - light unit will be switched on with a Softstart function, the pre-set continuous light output power will be restored.  
If not in use, please disconnect the light unit from the power supply completely.

## STATUS-LEDs

Additionally you will find on the back of the light units of the HEDLER Profilux® LED range several status LEDs. Their operation mode will be indicated by their glowing or blinking.

### Error

Indicates an operating mode error of the HEDLER Profilux® LED<sup>1400</sup> / HEDLER Profilux®. In this case the light unit has to be checked. Please contact HEDLER Systemlicht GmbH directly or contact your photographic specialized dealer.  
0049 (0)6482-918100  
info@hedler.com

### Please note:

If the light unit will be disconnected from the electric power supply the Error LED is glowing until the mains adapter is discharged. This is not indicating an error.

## Service

A blinking of this LED indicates that the HEDLER Profilux® LED<sup>1400</sup> light unit model was in operation for 6000 hours. The light unit should be send to HEDLER Systemlicht GmbH for recalibration. Please contact HEDLER Systemlicht GmbH directly or contact your photographic specialized dealer.

0049 (0)6482-918100  
info@hedler.com

## Power

A continuous glowing of this LED indicates the light unit is switched on.

## Cooling

A continuous glowing of this LED indicates the fan cooling is functional.

## LED

The light units of the HEDLER Profilux® LED range are equipped with one 185 W high power single cell LED with 138 lm/W, which can´t be replaced by the user. If any technical failure of the LED takes place please contact HEDLER Systemlicht GmbH or your photographic specialized dealer.

0049 (0)6482-918100  
info@hedler.com

## FRESNEL LENS

To replace the Fresnel lens: please, make sure that the housing of the HEDLER Profilux® LED<sup>1400</sup> / HEDLER Profilux® LED<sup>1400</sup> DMX has cooled off before interchanging the Fresnel lens, otherwise there is a risk of burning! Always disconnect the HEDLER Profilux® LED<sup>1400</sup> / HEDLER Profilux® LED<sup>1400</sup> DMX from the power supply before interchanging the Fresnel lens. Unscrew the four socket screws of the housings front plate and remove the front plate with the Fresnel lens. Unscrew the securing screws of the Fresnel lens and replace the defective one with an original HEDLER Fresnel lens only. After replacing the Fresnel lens tighten its securing screws hand-tight. Attach the front plate at the housing and tighten the front plates four securing screws. Please, before taking the HEDLER Profilux® LED<sup>1400</sup> / HEDLER Profilux® LED<sup>1400</sup> DMX in operation, make sure that the front plate is mounted correctly!

## FOCUSING

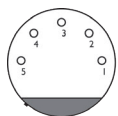
To focus the HEDLER Profilux® LED<sup>1400</sup> or the HEDLER Profilux® LED<sup>1400</sup> DMX light beam turn the focusing knob anti clock-wise (increased spotlight characteristic) or clock-wise (increased floodlight characteristic) to adjust the light beams size.

## DMX

At the back of the HEDLER Profilux® LED<sup>1400</sup> DMX light unit there are two 5-pin DMX-sockets with standard pin configuration. Connected to a suitable DMX controller the light units can be switched on / off and the light output power can be adjusted remotely. The upper DMX connect is used for the forementioned operations of the light unit. The lower DMX connect is used to connect another light unit and works as a „passthrough feature“ for the DMX-signal. Setting the DMX-address of the respectively light unit is done directly at the light unit, no additional accessory is needed.

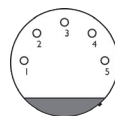
Setting the DMX-address will be done as follows: a) HEDLER Profilux® LED<sup>1400</sup> DMX must be connected to a power supply and switched off; b) press the key button Dimmer OFF / ON for approx. 3 seconds or until „A--“ is displayed and don´t release the key button; c) pressing the key button Fan 100% / Automatic or POWER OFF / ON once the numerical address of the light unit will be increased / decreased by one; d) to quit the process release the key button Dimmer OFF / ON.

## DMX-pin configuration of the HEDLER Profilux® LED<sup>1400</sup> DMX (front view)



### 5 pin XLR plug

- 1 - earth/shielding
- 2 - DMX-
- 3 - DMX+
- 4 - optional 2nd bus system - DMX-
- 5 - optional 2nd bus system - DMX+



### 5 pin XLR socket

- 1 - earth/shielding
- 2 - DMX-
- 3 - DMX+
- 4 - optional 2nd bus system - DMX-
- 5 - optional 2nd bus system - DMX+

# OPERATION MANUAL

## ACCESSORIES

Please notice our extensive range of reflectors, umbrellas, softboxes, stands and other accessories.  
Visit us on

[www.hedler.com](http://www.hedler.com)

## HEDLER WARRANTY

All HEDLER equipment is fully guaranteed against any material or manufacturing defects for three years after date of purchase. Parts made out of glass, fuses, halogen bulbs, flash tubes, Pyrex® coverings and single cell LED modules are not covered by this warranty.

## MAINTENANCE and REPAIR

For a secure operation of light units they have to be maintained. Therefore: before using light units they have to be checked visually and an electrical safety check has to be done every twelve month. The results of this check have to be documented and archived. If you have any questions about the safety check, please feel free to contact us.

0049 (0)6482-918100  
info@hedler.com

If repair is required, please, contact your dealer, the authorized distributor in your country or the HEDLER factory directly. Please note, that a pre-dismantled light unit could cause increased repair costs.

## CHECK

All HEDLER light units are tested at HEDLER Systemlicht GmbH according to DIN 0701/0702 with protocol I.  
This check has to be repeated yearly.  
Please contact us

0049 (0)6482-918100  
info@hedler.com

## PLEASE NOTE - SPECIAL SET-UP ADVICE

The light units of the HEDLER Profilux® LED range has an upside and an underside, setting-up the light unit it is important to take care of the correct position of these sides. The light unit is set-up correctly, if the QuickFit Adapter (located at the front side of the housing) is located beneath the safety glass / bulb respectively the Fresnel lens.

To ensure a continuous operation, the light units of the HEDLER Profilux® LED range has to be set-up / operated in the position described respectively as shown on the photograph.

If you take the light unit in operation in an upside-down set-up, the internal automatic temperature safety switch will (according to the ambient conditions) switch off the light unit after some operation time until it has cooled down. This is not a failure or a maloperation of the light unit of, it is a protection shutoff for the internal electronic ballast to prevent overheating.



Set-up correctly - shown for the HEDLER Profilux® LED<sup>1400</sup> with optional 4-Leaf barn door 360° attached.

## Safety instructions for Hedler light units and accessories

The following safety instructions are valid for Hedler light units and their accessory. Please, read these safety instructions completely before setting up a Hedler light unit and/or putting Hedler light unit(s) into operation. Please contact Hedler Systemlicht GmbH, 65594 Runkel directly, if you do have a technical question concerning Hedler light units and/or Hedler accessories. Please keep these safety instructions close in reach, if necessary you can download them from our website [www.hedler.com](http://www.hedler.com) as a PDF.

Hedler light unit(s), Hedler reflectors, softboxes, reflex umbrellas and/or Hedler accessories are designed for professional studio or indoor use only. Never use Hedler light unit(s), Hedler reflectors, softboxes, reflex umbrellas and/or Hedler accessories outdoors.

## Setting up and putting into operation

To put Hedler light unit(s) into operation it/they have to be set up, mounted, placed, secured and monitored appropriately.

- Always use a Hedler light unit in combination with a steady and secure standing light stand which has a loading capacity that is adequate for the weight of the light unit plus cable plus accessory/accessories. Always work within the light stand's loading capacity, especially if you are using, or plan to use, large and/or heavy folding reflectors.
- Appropriate action(s) to secure light stand(s) are (for example):
  - - mounting the light stand legs to the (stage) floor,
  - - weight down the light stand legs with appropriate filled sand bags for example,
  - - blockade the light stand area.
- Please note the permitted tilting of the Hedler light unit(s) of max. 45° upwards and max. 45° downwards.
- Set up a Hedler light unit - light stand combination on leveled floor only. Please make sure for tilt resistance while setting up / taking down and while in operation. Please make sure for an antislip stand while setting up / taking down and while in operation.
- For light unit(s) in operation the ambient temperature should not underrun -15°C (5°F) or exceed approx. 35°C (95°F).
- Acclimatisation: Avoid condensation problems because of high variations of temperature. If there are high variations of temperature do not use the Hedler light unit(s).
- Use Hedler light unit(s) in hospital(s), museum(s), factory (factories) asf. with permission of the appropriate / responsible public authority, administration, company management or business management only.
- If not taking care of this safety instructions there is in particular a serious risk of squeezing, cutting and/or burning caused by overthrowing, slipping or other reason(s) because of uncontrolled/unwanted movements of a light unit(s) while setting up / taking down and/or while in operation.
- Always use a double securing like a safety wire, if you mount a Hedler light unit overhead, which has a loading capacity that it could be loaded with the weight of the mounted light unit incl. accessory multiplied by five (for example: (light unit 4.5 kg + reflector 1.2 kg) \* 5 = 28.5 kg - for this case the safety wire to use must have a loading capacity of minimum 28.5 kg).
- Before putting a Hedler light unit into operation check all safety and/or positioning and/or light stand screws for being screwed in securely and/or hand-tight.
- Always keep a minimum distance of 100 cm between the safety glass (or accessories) and any combustible materials and/or any inflammable liquids, gases or explosives when a Hedler light unit is in use.
- Never use a Hedler light unit near any inflammable liquids, gases, materials or explosives that may be ignited by heat or spark.
- If you light through glass surfaces, windows and decoration surfaces keep appropriate distances between the light unit(s) and these materials, because these materials can burst if overheated and shatter could be a risk of injuries.
- Never store any combustible material(s) and/or any inflammable liquids, gases or explosives near any Hedler light unit(s).
- Never touch a Hedler light unit with wet hand and/or feet.
- Never use a Hedler light unit in extremely dusty nor in exceptionally humid and/or wet conditions.
- Never obstruct the forced air cooling (intakes or exhausts) in any way when the Hedler light unit is in use.
- Never obstruct the cooling intakes or exhausts in any way when the Hedler light unit is in use.
- Under no circumstances - do not block the cooling fan of a Hedler light unit.

- Never obstruct any opening of the housing of a Hedler light unit. Never stick any item(s) into any opening of the housing of a Hedler light unit. Otherwise there is the serious risk of an electrical shock, of a failure malfunction of the Hedler light unit, a short-circuit and/or a fire.
- Never carry a Hedler light unit by it's power cord and/or it's accessories.
- Always avoid the risk of a trip hazard caused by the power cord(s). If power cord(s) has/have to be layed down to the floor to connect the light unit(s) to the power supply: if possible do not so without appropriate marking or covering of the power cord(s).
- Always take care not to squeeze, to overrun, to stretch and/or to buckle the power cord of the Hedler light unit.
- Always take care that the power cord of a Hedler light unit is not worn out and/or is damaged in any way.
- Always take care not to cause a damage of the power cord of a Hedler light unit because of thermic, mechanical and/or chemical reason(s). Avoid such a risk under any circumstances.
- Never use a Hedler light unit with a defective power cord and/or plug. Replacement of a defective power cord has to be done by Hedler Systemlicht GmbH or an authorized specialist shop only. Never use a Hedler light unit with a „repaired“ power cord. A defective power cord must be replaced.
- Some of the Hedler continuous light units do have a high power consumption. Always take care, that the power supply is designed for such a high power consumption.
- Before use check your Hedler product for possible damage(s):

Component:	possible damage(s):
housing, lens, safety glass	crack, split, deformation
power cord	deformation, isolation damage, charred
power plug, mains plug	deformation, broken, charred
bracket and handle	not tightend, sliding block broken, brake disc doesn't work (correctly)

### Operation

- Never use a Hedler light unit with a defective safety glass, a defective Pyrex® cover, a defective flash bulb, defective bulb(s) and/or defective fuse(s).
- Never put a Hedler light unit into operation with a defective safety glass, a defective Pyrex® cover, a defective flash bulb, defective bulb(s) and/or defective fuse(s).
- Under any circumstances keep the minimum safety distance(s) given on the identification plate and / or the safety label to avoid damages caused by light beam(s) and / or thermal radiation and / or heat radiation to person(s), animal(s) and / or item(s) and / or object(s).
- In the case of a defect or damage of the safety glass, the Pyrex® cover, the bulb(s), the flash bulb and/or the fuse(s) of a Hedler light unit (particularly while it is in operation): switch of the light unit immediately, disconnect it from the power supply, let it cool down completely and replace the defective safety glass, Pyrex® cover, the bulb(s) and/or fuse(s) with the intended original Hedler spare part. Changing/replacing a flash bulb of a Hedler light unit is not allowed to be done by a customer. Changing/replacing of a flash bulb has to done by Hedler Systemlicht GmbH only.
- Never use a Hedler light unit unattended.
- Always disconnect Hedler light unit(s) from the power supply if it/they is/are not in use or in operation.
- Hedler light units are not designed and they are not suitable for the use as a room lighting.
- Never use a Hedler light unit for any reason other than photographic or cinematic lighting.
- While in operation avoid to jar heavily, moving jerkily and/or overthrowing Hedler light units - this could cause breaking, fragmenting into parts and/or bursting of the bulb(s) and/or flash bulbs and/or parts made out of glass; because of this there is a serious risk of cutting and/or burning in particular and the risk of damage to property like combustion, discoloring/staining, sparking, and so on.
- In the case of overthrowing, falling down and/or jaring heavily a Hedler light unit it has to be checked by Hedler Systemlicht GmbH or a specialist shop authorized by Hedler Systemlicht GmbH for damages.

### Safety glass, Pyrex® cover and flash bulbs, bulbs and fuses

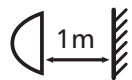
- Before performing any kind of maintenance work on the light unit - always disconnect the Hedler light unit from the power supply and let cool down the light unit completely.

- Before changing a safety glass or a Pyrex® cover - always disconnect the Hedler light unit from the power supply and let cool down the light unit completely.
- Before changing a bulb and/or fuse - always disconnect the Hedler light unit from the power supply and let cool down the light unit completely.
- For replacing a safety glass or Pyrex® cover - use the intended original Hedler spare parts only.
- For replacing a bulb and/or fuse(s) - use the intended original Hedler spare parts only.
- Never use a „repaired“ fuse.
- Changing/replacing a flash bulb of a Hedler light unit is not allowed to be done by a customer. Changing/replacing of a flash bulb has to be done by Hedler Systemlicht GmbH only.

## Additional safety instructions and explanation for symbols

- Hedler light units produce a very intensive and bright beam of light: never look directly into the bulb and/or flash bulb. while it is in operation. Never light or flash directly into the eye(s) of a human or an animal, this can cause permanent damage to the eye(s) or health threat(s) (like sunburn).
- Please note, dazzle / glare caused by continuous light unit(s) or flash light unit(s) can cause an immediate (partly and/or temporarily) loss of vision - this can lead to accident(s) (traffic, stairs, and so forth).
- Before (inter-)changing accessories, light modifier(s) or bulb(s) - switch off the light unit(s) and let it cool down completely.
- Some Hedler light units and/or Hedler reflectors, parts of softboxes and reflex umbrellas and some accessories can heat up extremely while in operation: there is a serious risk of burning. Never touch these parts while they are in operation. (Please, use heatresistant and heatprotecting gloves to avoid burning!).
- Please let cool down Hedler light units and/or Hedler reflectors, parts of softboxes and reflex umbrellas and some accessories completely after using them and before packing them away: not doing so can cause serious burnig and/or the risk of sparking.
- Not used as intended and/or in the case of inappropriate use of Hedler light units and/or Hedler reflectors, parts of softboxes and reflex umbrellas and accessories there is the serious risk of a (deadly) electrical shock.
- Hedler light units, Hedler reflectors, softboxes, reflex umbrellas and/or Hedler accessories are no toys, they are unsuitable for use by children. Always keep Hedler light units, Hedler reflectors, softboxes, reflex umbrellas and/or Hedler accessories out of the reach of children.

## Explanation for symbols:



Minimum  
distance



Heat  
°C / °F



Volt /  
Voltage



Watt /  
Demand



Min. load  
capacity



Warning  
Voltage



CE



Bin  
WEEE

## Maintenance

For a secure operation of light units they have to be maintained. Therefore: before using light units they have to be checked visually and an electrical safety check has to be done every twelve month. The results of this check have to be documented and archived.

## Liability limitation

For all injurries and/or damages to people and/or objects, which are caused by using Hedler products in a way that the are not intended for the user is liable - not the manufacturer.

If you do have a question to set up and/or to operate Hedler light units, Hedler reflectors, softboxes, reflex umbrellas and/or Hedler accessory, please ask at Hedler Systemlicht GmbH directly or at the Hedler authorized photographic specialised dealer (a list with this dealers you will find on our website [www.hedler.com](http://www.hedler.com)).