

OPERATION MANUAL



< 5056 >
HEDLER Profilux® LED¹⁰⁰⁰

< 5057 >
HEDLER Profilux® LED¹⁰⁰⁰ DMX

< 5058 >
HEDLER Profilux® LED¹⁰⁰⁰ x

< 5059 >
HEDLER Profilux® LED¹⁰⁰⁰ x DMX

HEDLER Profilux® LED¹⁰⁰⁰ (DMX) and HEDLER Profilux® LED¹⁰⁰⁰x (DMX) operation manual. Thank you for choosing a Hedler light unit of the HEDLER Profilux® LED¹⁰⁰⁰ range and your confidence in the Hedler light system. Please, read the following technical informations and the Hedler safety instructions carefully before using the light unit. Codes are given in < brackets >.



TECHNICAL DESCRIPTION

Light units of the HEDLER LED range are designed for professional use, they are assembled by applying precision methods and tested individually for function and quality. The focusable daylight HEDLER Profilux® LED¹⁰⁰⁰ (DMX) light units as well as the daylight HEDLER Profilux® LED¹⁰⁰⁰x (DMX) light units are provided with an integrated U-bracket and a friction brake and a 5/8" Quick-Lock light stand attachment. After loosening the hex key screws by approx. 2 turns, the U-bracket can be moved back and forth in its keyway for gravity adjustment and it is turnable for right and left hand use.

The light units of the HEDLER Profilux® LED¹⁰⁰⁰ range are designed for AC use from 110 - 230 V (with automatic mains voltage recognition) and 50 / 60 Hz and are equipped with a LED Softstart feature. They use one 185 W highpower single cell LED and generate a flicker-free light @ approx. 5600 K and a CRI > 95. They have an extremely quiet cooling. It can be used in automatic mode or can be switched manually to 100%. Besides they are equipped with a special active LED fan cooling and an integrated safety switch-off.

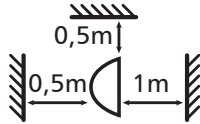
At their front sides the aluminium housings hold a Fresnel lens (HEDLER Profilux® LED¹⁰⁰⁰ (DMX)) or a safety glass (HEDLER Profilux® LED¹⁰⁰⁰x (DMX)) and the QuickFit adapter (compatible with the Hedler Uni-Adapt system) for reflectors. The light units of the HEDLER Profilux® LED¹⁰⁰⁰ range can be equipped with all the latest Hedler reflectors and softboxes optionally. Because of the QuickFit adapter attaching a reflector or softbox is extremely comfortable: Interchangeable reflectors with bayonet ring can be attached in the following way: place the rim of the ring into the guide grooves of the upper studs and the round opening over the cone-shaped bolt, and lock it by a turn to the left. To attach the rotatable 4-Leaf barndoors or a MaxiSoft folding reflector, place the rim of the ring into the guide grooves of the upper studs, and then push the complete reflector towards the QuickFit's cone-shaped bolt until the ring locks in the bolt's groove. Detach the reflector by lifting the QuickFit's handle, moving the lower side of the reflector away from the light unit's housing, and then lifting the reflector's ring out of the guide grooves of the upper studs.

The focusing option of the light units HEDLER Profilux® LED¹⁰⁰⁰ and HEDLER Profilux® LED¹⁰⁰⁰ DMX allows to adjust the light beam from spot up to flood light characteristic. Simply turn the focusing knob located at the back of the housing and the size of the light beams diameter can be adjusted precisely to your lighting needs or ideas - intuitively.

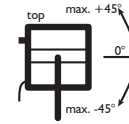
OPERATION MANUAL

TECHNICAL DATA Profilux® LED¹⁰⁰⁰

Type: Profilux® LED ¹⁰⁰⁰	Voltage: 110 - 230 V ~ 1,0A 50/60 Hz	Power: 185 W LED	Risk group: 0-RG
Color: CRI > 95	Kelvin: 5600K	Safety class system: I	Protection category: IP30
Weight: 3300g	Ambient temperature (Ta): -15° - +40° C	Surface temperature: 85°C	
Light stand attachment: 5/8"	Fresnel lens code: < 6507 >	Light unit code: < 5056 >	



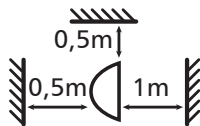
Safety clearance:
Under any circumstances do not under-run the safety clearances given within the graphic to inflammable material!



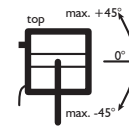
Position:
Tilt light unit max. 45° upwards/downwards in operation!

TECHNICAL DATA Profilux® LED¹⁰⁰⁰ DMX

Type: Profilux® LED ¹⁰⁰⁰ DMX	Voltage: 110 - 230 V ~ 1,0A 50/60 Hz	Power: 185 W LED	Risk group: 0-RG
Color: CRI > 95	Kelvin: 5600K	Safety class system: I	Protection category: IP30
Weight: 3400g	Ambient temperature (Ta): -15° - +40° C	Surface temperature: 85°C	
Light stand attachment: 5/8"	Fresnel lens code: < 6507 >	Light unit code: < 5057 >	



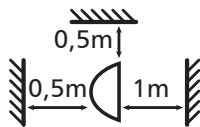
Safety clearance:
Under any circumstances do not under-run the safety clearances given within the graphic to inflammable material!



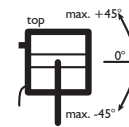
Position:
Tilt light unit max. 45° upwards/downwards in operation!

TECHNICAL DATA Profilux® LED¹⁰⁰⁰x

Type: Profilux® LED ¹⁰⁰⁰ x	Voltage: 110 - 230 V ~ 1,0A 50/60 Hz	Power: 185 W LED	Risk group: 0-RG
Color: CRI > 95	Kelvin: 5600K	Safety class system: I	Protection category: IP30
Weight: 3200g	Ambient temperature (Ta): -15° - +40° C	Surface temperature: 85°C	
Light stand attachment: 5/8"	Safety glass code: < 2051 >	Light unit code: < 5058 >	



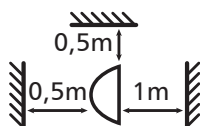
Safety clearance:
Under any circumstances do not under-run the safety clearances given within the graphic to inflammable material!



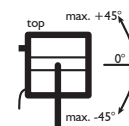
Position:
Tilt light unit max. 45° upwards/downwards in operation!

TECHNICAL DATA Profilux® LED¹⁰⁰⁰x DMX

Type: Profilux® LED ¹⁰⁰⁰ x DMX	Voltage: 110 - 230 V ~ 1,0A 50/60 Hz	Power: 185 W LED	Risk group: 0-RG
Color: CRI > 95	Kelvin: 5600K	Safety class system: I	Protection category: IP30
Weight: 3300g	Ambient temperature (Ta): -15° - +40° C	Surface temperature: 85°C	
Light stand attachment: 5/8"	Safety glass code: < 2051 >	Light unit code: < 5059 >	



Safety clearance:
Under any circumstances do not under-run the safety clearances given within the graphic to inflammable material!



Position:
Tilt light unit max. 45° upwards/downwards in operation!

OPERATION MANUAL

KEY BUTTONS

On the back of the light units of the HEDLER Profilux® LED¹⁰⁰⁰ range housings there are several key buttons. By pressing them the indicated functions will be switched alternately.

Fan 100% / Automatic

100% - the fan cooling of the light units of the HEDLER Profilux® LED¹⁰⁰⁰ range will be set to full power irrespective of the operating temperature;
Automatic - the power of the fan cooling will be regulated as a function of the operating temperature

Dimmer OFF / ON

OFF - the continuous light output power is set to maximum (100%), the setting of the rotary potentiometer will be ignored;
ON - dimming function is available by turning the rotary potentiometer

POWER OFF / ON

OFF - light unit will be switched off or rather into stand-by-mode (if the light unit has to be currentless you have to disconnect the light unit from the electric power supply);
ON - light unit will be switched on with a Softstart function, the pre-set continuous light output power will be restored
If not in use, please disconnect the light unit from the power supply completely.

STATUS-LEDs

Additionally you will find on the back of the light units of the HEDLER Profilux® LED¹⁰⁰⁰ range housings several status LEDs. The light units operation mode will be indicated by their glowing or blinking.

Error

Indicates an operating mode error of the HEDLER Profilux® LED¹⁰⁰⁰ light unit model. In this case the light unit has to be checked. Please contact Hedler Systemlicht GmbH directly or contact your photographic specialized dealer.

Please note:

If the light unit will be disconnected from the electric power supply the Error LED is glowing until the mains adapter is discharged. This is not indicating an error.

Service

A blinking of this LED indicates that the HEDLER Profilux® LED¹⁰⁰⁰ light unit model was in operation for 6000 hours. The light unit should be send to Hedler Systemlicht GmbH for recalibration. Please contact Hedler Systemlicht GmbH directly or contact your photographic specialized dealer.

If you do not want a recalibration at this time and if you like to switch off the blinking of the LED, please proceed the following:

1. While the light unit is in operation press the **Fan-** and the **Dimmer-key button** at the same time for at least 3 seconds.
2. The blinking of the LED will be switched off. The operation-hour counter of the Service-LED will be reset.

Please note:

After 6000 hours in operation the Service-LED will start to blink again. If a recalibration is not wanted at this time again und if you like to switch off the blinking of the LED, please proceed the steps described under step 1. (see above). This procedure can be repeated three times (maximal).
If the Service-LED starts to blink at a later date again, the light unit should be send to Hedler Systemlicht GmbH for recalibration necessarily.

Power

A continuous glowing of this LED indicates the light unit is switched on.

Cooling

A continuous glowing of this LED indicates the fan cooling is working.

OPERATION MANUAL

LED

The light units of the HEDLER Profilux® LED¹⁰⁰⁰ range are equipped with one 185 W high power single cell LED with 135 lm/W, which can't be replaced by the user. If any technical failure of the LED takes place please contact Hedler Systemlicht GmbH or your photographic specialized dealer how to proceed.

FRESNEL LENS (light units HEDLER Profilux® LED¹⁰⁰⁰ and HEDLER Profilux® LED¹⁰⁰⁰ DMX)

To replace the Fresnel lens: please, make sure that the housing of the HEDLER Profilux® LED¹⁰⁰⁰ / HEDLER Profilux® LED¹⁰⁰⁰ DMX has cooled off before interchanging the Fresnel lens, otherwise there is a risk of burning! Always disconnect the HEDLER Profilux® LED¹⁰⁰⁰ / HEDLER Profilux® LED¹⁰⁰⁰ DMX from the power supply before interchanging the Fresnel lens. Unscrew the four socket screws of the housings front plate and remove the front plate with the Fresnel lens. Unscrew the securing screws of the Fresnel lens and replace the defective one with an original Hedler Fresnel lens only. After replacing the Fresnel lens tighten its securing screws hand-tight. Attach the front plate at the housing and tighten the front plates four securing screws. Please, before taking the HEDLER Profilux® LED¹⁰⁰⁰ / HEDLER Profilux® LED¹⁰⁰⁰ DMX in operation, make sure that the front plate is mounted correctly!

FOCUSING the HEDLER Profilux® LED¹⁰⁰⁰ or the HEDLER Profilux® LED¹⁰⁰⁰ DMX

To focus the HEDLER Profilux® LED¹⁰⁰⁰ or the HEDLER Profilux® LED¹⁰⁰⁰ DMX light beam turn the focusing knob anti clock-wise (increased spotlight characteristic) or clock-wise (increased floodlight characteristic) to adjust the light beams size.

SAFETY GLASS (light units HEDLER Profilux® LED¹⁰⁰⁰x and HEDLER Profilux® LED¹⁰⁰⁰x DMX)

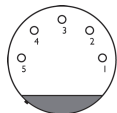
To replace the safety glass: please, make sure that the housing of the HEDLER Profilux® LED¹⁰⁰⁰x or the HEDLER Profilux® LED¹⁰⁰⁰x DMX has cooled off before interchanging the safety glass, otherwise there is a risk of burning! Always disconnect the HEDLER Profilux® LED¹⁰⁰⁰x or the HEDLER Profilux® LED¹⁰⁰⁰x DMX from the power supply before interchanging the safety glass. Unscrew the securing screw, turn the clip sideways which is securing the Borofloat™ safety glass and remove the glass. Replace the safety glass with a new one, turn the clip sideways into the opposite direction until it secures the Borofloat™ safety glass and thighten the securing screw. Please, before taking the HEDLER Profilux® LED¹⁰⁰⁰x / HEDLER Profilux® LED¹⁰⁰⁰x DMX in operation, make sure that the safety glass and clip is mounted correctly and its clip is tightened.

DMX (light units HEDLER Profilux® LED¹⁰⁰⁰ DMX and HEDLER Profilux® LED¹⁰⁰⁰x DMX only)

At the back of both light unit types there are two 5-pin DMX-sockets with standard pin configuration. Connected to a suitable DMX controller the light units can be switched on / off and the light output power can be adjusted remotely. The upper DMX connect is used for the forementioned operations of the light unit. The lower DMX connect is used to connect another light unit and works as a „pass-through feature“ for the DMX-signal. Setting the DMX-address of the respectively light unit is done directly at the light unit, no additional accessory is needed.

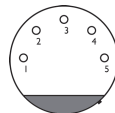
Setting the DMX-address will be done as follows: a) HEDLER Profilux® LED¹⁰⁰⁰ DMX or HEDLER Profilux® LED¹⁰⁰⁰x DMX must be connected to a power supply and switched off; b) press the key button Dimmer OFF / ON for approx. 3 seconds or until „A--“ is displayed and don't release the key button; c) pressing the key button Fan 100% / Automatic or POWER OFF / ON once the numerical address of the light unit will be increased / decreased by one; d) to quit the process release the key button Dimmer OFF / ON.

DMX-pin configuration of the HEDLER Profilux® LED¹⁰⁰⁰ DMX and HEDLER Profilux® LED¹⁰⁰⁰x DMX (front view)



5 pin XLR plug

- 1 - earth/shielding
- 2 - DMX-
- 3 - DMX+
- 4 - optional 2nd bus system - DMX-
- 5 - optional 2nd bus system - DMX+



5 pin XLR socket

- 1 - earth/shielding
- 2 - DMX-
- 3 - DMX+
- 4 - optional 2nd bus system - DMX-
- 5 - optional 2nd bus system - DMX+

ACCESSORIES

It is recommended to use light units of the HEDLER Profilux® LED¹⁰⁰⁰ range in combination with an original HEDLER 4-Leaf barndoor 360° or one of the HEDLER accessory reflectors only. This permits adjusting the light beam to the requirements of any situation. In addition to the reflectors MaxiNorm, MaxiSun, MaxiBrite, MaxiBeauty and MaxiBackground or the MaxiSoft folding reflectors (=softboxes) 30 x 30cm, 50 x 50cm, 70 x 70cm, 90 x 90cm, L110 x 45cm and Octagon 100cm, the HEDLER 4-Leaf barndoor 360°, reflex umbrellas and grids for several softboxes/reflectors are available. Additionally, the MaxiSpot 65 and MaxiSpot 130 are available for effect lighting.

Please note: while in operation reflectors will heat up, some of them very much: there is a risk of serious burning if touched (intentionally or unintended).

OPERATION MANUAL

HEDLER WARRANTY

All Hedler equipment is fully guaranteed against any material or manufacturing defects for three years after date of purchase. Parts made out of glass, fuses, halogen bulbs, flash tubes, Pyrex® coverings and single cell LED modules are not covered by this warranty.

MAINTENANCE and REPAIR

For a secure operation of light units they have to be maintained. Therefore: before using light units they have to be checked visually and an electrical safety check has to be done every twelve month. The results of this check have to be documented and archived. If repair is required, please, contact your dealer, the authorized distributor in your country or the Hedler factory directly. Please note, that a pre-dismantled light unit could cause increased repair costs.

CHECK

All HEDLER light units are tested at HEDLER Systemlicht GmbH according to DIN 0701/0702 with protocol I.

PLEASE NOTE - SPECIAL SET-UP ADVICE

The light units of the HEDLER Profilux® LED¹⁰⁰⁰ range have an upside and an underside, setting-up the light unit it is important to take care of the correct position of these sides. The light unit is set-up correctly, if the QuickFit Adapter (located at the front side of the housing) is located beneath the safety glass / bulb respectively the Fresnel lens.

To ensure a continuous operation, the light units of the HEDLER Profilux® LED¹⁰⁰⁰ range have to be set-up / operated in the position described respectively as shown on the photograph.

If you take the light unit in operation in an upside-down set-up, the internal automatic temperature safety switch will (according to the ambient conditions) switch off the light unit after some operation time until it has cooled down. This is not a failure or a maloperation of one of the light units of the HEDLER Profilux® LED¹⁰⁰⁰ range, it is a protection shutoff for the internal electronic ballast to prevent overheating.



Set-up correctly - shown for the HEDLER Profilux® LED¹⁰⁰⁰ with optional 4-Leaf barndoor 360° attached.

Safety instructions for Hedler light units and accessories

The following safety instructions are valid for Hedler light units and their accessory. Please, read these safety instructions completely before setting up a Hedler light unit and/or putting Hedler light unit(s) into operation. Please contact Hedler Systemlicht GmbH, 65594 Runkel directly, if you do have a technical question concerning Hedler light units and/or Hedler accessories. Please keep these safety instructions close in reach, if necessary you can download them from our website www.hedler.com as a PDF.

Hedler light unit(s), Hedler reflectors, softboxes, reflex umbrellas and/or Hedler accessories are designed for professional studio or indoor use only. Never use Hedler light unit(s), Hedler reflectors, softboxes, reflex umbrellas and/or Hedler accessories outdoors.

Setting up and putting into operation

To put Hedler light unit(s) into operation it/they have to be set up, mounted, placed, secured and monitored appropriately.

- Always use a Hedler light unit in combination with a steady and secure standing light stand which has a loading capacity that is adequate for the weight of the light unit plus cable plus accessory/accessories. Always work within the light stand's loading capacity, especially if you are using, or plan to use, large and/or heavy folding reflectors.
- Appropriate action(s) to secure light stand(s) are (for example):
 - - mounting the light stand legs to the (stage) floor,
 - - weight down the light stand legs with appropriate filled sand bags for example,
 - - blockade the light stand area.
- Please note the permitted tilting of the Hedler light unit(s) of max. 45° upwards and max. 45° downwards.
- Set up a Hedler light unit - light stand combination on leveled floor only. Please make sure for tilt resistance while setting up / taking down and while in operation. Please make sure for an antislip stand while setting up / taking down and while in operation.
- For light unit(s) in operation the ambient temperature should not underrun -15°C (5°F) or exceed approx. 35°C (95°F).
- Acclimatisation: Avoid condensation problems because of high variations of temperature. If there are high variations of temperature do not use the Hedler light unit(s).
- Use Hedler light unit(s) in hospital(s), museum(s), factory (factories) asf. with permission of the appropriate / responsible public authority, administration, company management or business management only.
- If not taking care of this safety instructions there is in particular a serious risk of squeezing, cutting and/or burning caused by overthrowing, slipping or other reason(s) because of uncontrolled/unwanted movements of a light unit(s) while setting up / taking down and/or while in operation.
- Always use a double securing like a safety wire, if you mount a Hedler light unit overhead, which has a loading capacity that it could be loaded with the weight of the mounted light unit incl. accessory multiplied by five (for example: (light unit 4.5 kg + reflector 1.2 kg) * 5 = 28.5 kg - for this case the safety wire to use must have a loading capacity of minimum 28.5 kg).
- Before putting a Hedler light unit into operation check all safety and/or positioning and/or light stand screws for being screwed in securely and/or hand-tight.
- Always keep a minimum distance of 100 cm between the safety glass (or accessories) and any combustible materials and/or any inflammable liquids, gases or explosives when a Hedler light unit is in use.
- Never use a Hedler light unit near any inflammable liquids, gases, materials or explosives that may be ignited by heat or spark.
- If you light through glass surfaces, windows and decoration surfaces keep appropriate distances between the light unit(s) and these materials, because these materials can burst if overheated and shatter could be a risk of injuries.
- Never store any combustible material(s) and/or any inflammable liquids, gases or explosives near any Hedler light unit(s).
- Never touch a Hedler light unit with wet hand and/or feet.
- Never use a Hedler light unit in extremely dusty nor in exceptionally humid and/or wet conditions.
- Never obstruct the forced air cooling (intakes or exhausts) in any way when the Hedler light unit is in use.
- Never obstruct the cooling intakes or exhausts in any way when the Hedler light unit is in use.
- Under no circumstances - do not block the cooling fan of a Hedler light unit.

- Never obstruct any opening of the housing of a Hedler light unit. Never stick any item(s) into any opening of the housing of a Hedler light unit. Otherwise there is the serious risk of an electrical shock, of a failure malfunction of the Hedler light unit, a short-circuit and/or a fire.
- Never carry a Hedler light unit by its power cord and/or its accessories.
- Always avoid the risk of a trip hazard caused by the power cord(s). If power cord(s) has/have to be layed down to the floor to connect the light unit(s) to the power supply: if possible do not so without appropriate marking or covering of the power cord(s).
- Always take care not to squeeze, to overrun, to stretch and/or to buckle the power cord of the Hedler light unit.
- Always take care that the power cord of a Hedler light unit is not worn out and/or is damaged in any way.
- Always take care not to cause a damage of the power cord of a Hedler light unit because of thermic, mechanical and/or chemical reason(s). Avoid such a risk under any circumstances.
- Never use a Hedler light unit with a defective power cord and/or plug. Replacement of a defective power cord has to be done by Hedler Systemlicht GmbH or an authorized specialist shop only. Never use a Hedler light unit with a „repaired“ power cord. A defective power cord must be replaced.
- Some of the Hedler continuous light units do have a high power consumption. Always take care, that the power supply is designed for such a high power consumption.
- Before use check your Hedler product for possible damage(s):

Component:	possible damage(s):
housing, lens, safety glass	crack, split, deformation
power cord	deformation, isolation damage, charred
power plug, mains plug	deformation, broken, charred
bracket and handle	not tightend, sliding block broken, brake disc doesn't work (correctly)

Operation

- Never use a Hedler light unit with a defective safety glass, a defective Pyrex® cover, a defective flash bulb, defective bulb(s) and/or defective fuse(s).
- Never put a Hedler light unit into operation with a defective safety glass, a defective Pyrex® cover, a defective flash bulb, defective bulb(s) and/or defective fuse(s).
- Under any circumstances keep the minimum safety distance(s) given on the identification plate and / or the safety label to avoid damages caused by light beam(s) and / or thermal radiation and / or heat radiation to person(s), animal(s) and / or item(s) and / or object(s).
- In the case of a defect or damage of the safety glass, the Pyrex® cover, the bulb(s), the flash bulb and/or the fuse(s) of a Hedler light unit (particularly while it is in operation): switch of the light unit immediately, disconnect it from the power supply, let it cool down completely and replace the defective safety glass, Pyrex® cover, the bulb(s) and/or fuse(s) with the intended original Hedler spare part. Changing/replacing a flash bulb of a Hedler light unit is not allowed to be done by a customer. Changing/replacing of a flash bulb has to be done by Hedler Systemlicht GmbH only.
- Never use a Hedler light unit unattended.
- Always disconnect Hedler light unit(s) from the power supply if it/they is/are not in use or in operation.
- Hedler light units are not designed and they are not suitable for the use as a room lighting.
- Never use a Hedler light unit for any reason other than photographic or cinematic lighting.
- While in operation avoid to jar heavily, moving jerkily and/or overthrowing Hedler light units - this could cause breaking, fragmenting into parts and/or bursting of the bulb(s) and/or flash bulbs and/or parts made out of glass; because of this there is a serious risk of cutting and/or burning in particular and the risk of damage to property like combustion, discoloring/staining, sparking, and so on.
- In the case of overthrowing, falling down and/or jaring heavily a Hedler light unit it has to be checked by Hedler Systemlicht GmbH or a specialist shop authorized by Hedler Systemlicht GmbH for damages.

Safety glass, Pyrex® cover and flash bulbs, bulbs and fuses

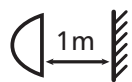
- Before performing any kind of maintenance work on the light unit - always disconnect the Hedler light unit from the power supply and let cool down the light unit completely.

- Before changing a safety glass or a Pyrex® cover - always disconnect the Hedler light unit from the power supply and let cool down the light unit completely.
- Before changing a bulb and/or fuse - always disconnect the Hedler light unit from the power supply and let cool down the light unit completely.
- For replacing a safety glass or Pyrex® cover - use the intended original Hedler spare parts only.
- For replacing a bulb and/or fuse(s) - use the intended original Hedler spare parts only.
- Never use a „repaired“ fuse.
- Changing/replacing a flash bulb of a Hedler light unit is not allowed to be done by a customer. Changing/replacing of a flash bulb has to be done by Hedler Systemlicht GmbH only.

Additional safety instructions and explanation for symbols

- Hedler light units produce a very intensive and bright beam of light: never look directly into the bulb and/or flash bulb. while it is in operation. Never light or flash directly into the eye(s) of a human or an animal, this can cause permanent damage to the eye(s) or health threat(s) (like sunburn).
- Please note, dazzle / glare caused by continuous light unit(s) or flash light unit(s) can cause an immediate (partly and/or temporarily) loss of vision - this can lead to accident(s) (traffic, stairs, and so forth).
- Before (inter-)changing accessories, light modifier(s) or bulb(s) - switch off the light unit(s) and let it cool down completely.
- Some Hedler light units and/or Hedler reflectors, parts of softboxes and reflex umbrellas and some accessories can heat up extremely while in operation: there is a serious risk of burning. Never touch these parts while they are in operation. (Please, use heatresistant and heatprotecting gloves to avoid burning!).
- Please let cool down Hedler light units and/or Hedler reflectors, parts of softboxes and reflex umbrellas and some accessories completely after using them and before packing them away: not doing so can cause serious burnign and/or the risk of sparking.
- Not used as intended and/or in the case of inappropriate use of Hedler light units and/or Hedler reflectors, parts of softboxes and reflex umbrellas and accessories there is the serious risk of a (deadly) electrical shock.
- Hedler light units, Hedler reflectors, softboxes, reflex umbrellas and/or Hedler accessories are no toys, they are unsuitable for use by children. Always keep Hedler light units, Hedler reflectors, softboxes, reflex umbrellas and/or Hedler accessories out of the reach of children.

Explanation for symbols:



Minimum
distance



Heat
°C / °F



Volt /
Voltage



Watt /
Demand



Min. load
capacity



Warning
Voltage



CE



Bin
WEEE

Maintenance

For a secure operation of light units they have to be maintained. Therefore: before using light units they have to be checked visually and an electrical safety check has to be done every twelve month. The results of this check have to be documented and archived.

Liability limitation

For all injurries and/or damages to people and/or objects, which are caused by using Hedler products in a way that the are not intended for the user is liable - not the manufacturer.

If you do have a question to set up and/or to operate Hedler light units, Hedler reflectors, softboxes, reflex umbrellas and/or Hedler accessory, please ask at Hedler Systemlicht GmbH directly or at the Hedler authorized photographic specialised dealer (a list with this dealers you will find on our website www.hedler.com).