



Thank you for choosing a Hedler light unit and your confidence in the Hedler light system. Please, read the following technical informations carefully before using the light unit.

Codes are given in <Brackets>.



TECHNICAL DESCRIPTION

The light unit HEDLER HF65 is designed for professional use, they are assembled by applying precision methods and tested individually for function and quality. The HEDLER HF 65 is provided with an integrated U-bracket and a friction brake and a 5/8" Quick-Lock light stand attachment. After loosening the hex key screws by app. 2 turns, the U-bracket can be moved back and forth in its keyway for gravity adjustment and it is turnable for right and left hand use.

The HEDLER HF65 is designed for the use at a power supply of 110V - 230V. Please note: the bulb socket can be equipped with specific bulbs of maximum 650 Watts only.

230 Volt = 650 Watt / 150 hrs. / GY 9.5 / 230V code < 64717>. Besides that, it is possible to equip the HF65 with the following bulbs of lower continuous light output power: 500 Watts / 200 h. / GY 9.5 / order number 64674 or 300 Watts / 200 h. / GY 9.5 / order number 64673.

110 Volt = If the HEDLER HF65 is used at a 110V power supply, the Tungsten halogen bulb has to be interchanged with a Tungsten halogen bulb that suits for 110V and a power of maximum 650 Watt. The HEDLER HF65 is equipped with a socket type: GY 9.5.

The HEDLER HF65 is particularly suited as a DV and AV lighting source, because it does not have any fan. This ensures an original sound recording - for example while an interview or a video portrait - without disturbing noise caused by the light source.

While in operating mode the light unit will be very hot. ALWAYS use the integrated hand grip on the back of the light unit's housing to adjust the lighting angle. NEVER touch the housing of the HEDLER HF65 when it is in use, and ALWAYS let the HF65 cool down for at least 30 minutes after use before taking it off the light stand or storing/packing it away.

On its front side, the aluminium housing holds the Fresnel lens with its protective grid. Additionally there are the Uni-Adapt studs for attaching reflectors and folding reflectors.

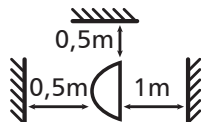
Interchangeable reflectors with bayonet ring can be attached in the following way: place the rim of the ring into the guide grooves of the upper studs and the round opening over the cone-shaped bolt, and lock it by a turn to the left. To attach the rotatable 4-Leaf barn door or a MaxiSoft folding reflector, place the rim of the ring into the guide grooves of the upper studs, and then push the complete reflector towards the QuickFit's cone-shaped bolt until the ring locks in the bolt's groove. Detach the reflector by lifting the QuickFit's handle, moving the lower side of the reflector away from the light unit's housing, and then lifting the reflector's ring out of the guide grooves of the upper studs.

On the opposite side of the housing, one will find the ergonomically incorporated handgrip, the cable and for visual function control illuminated main switch. Additionally you will find on the backside of the housing the focusing turning knob, which allows to adjust precisely and intuitively the size of the light beam from spot- to floodlight setting

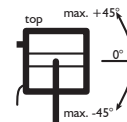
OPERATION MANUAL

TECHNICAL DATA HF65

Type: HF65	Voltage: 110 - 230 V ~ 4A 50/60 Hz	Power: max. 650 W	Fuse: ---
Color: CRI > 97	Kelvin: 3200K	Safety class system: I	Protection category: IP30
Weight: 2350g	Ambient temperature (Ta): -15° - +40° C	Surface temperature: 220°C	Risk group: I-RG
Light stand attachment: 5/8"	Fresnel lens code: < 6507 >	Light unit code: < 6511 >	



Safety clearance:
Under any circumstances do not under-run the safety clearances given within the graphic to inflammable material!



Position:
Tilt light unit max. 45° upwards/downwards in operation!

BULBS

To replace the bulb: please, make sure that the housing and the bulb of the HF65 has off before interchanging the bulb, otherwise there is a risk of burning! Always disconnect the HF65 from the power supply before interchanging the bulb. Unscrew the socket screw of the cover plate guard. The cover plate guard is located on the housings upper side, its socket screw is located at the flange which faces towards the housings back. To unscrew the socket screw, use the socket wrench which was delivered with the HF65. After loosening the socket screw completely remove the cover plate guard.

Turn the focusing knob until the HF65 has its maximum spot light position. Pull the defective bulb out of the socket, after doing so push the new bulb carefully into the socket, observing instructions by the bulb manufacturer.

After pushing the bulb into its socket, replace the cover plate guard. Make sure that its lug is located correctly into the housings notch. Afterwards install the socket screw into the housings thread and tighten it hand-tight. Please, before taking the HEDLER HF65 in operation, make sure that the cover plate guard is mounted correctly!

FRESNEL LENS

To replace the Fresnel lens: please, make sure that the housing of the HF65 has cooled off before interchanging the Fresnel lens, otherwise there is a risk of burning! Always disconnect the HF65 from the power supply before interchanging the Fresnel lens. Unscrew the four socket screws of the housings front plate and remove the front plate with the Fresnel lens. Unscrew the securing screws of the Fresnel lens and replace the defective one with an original Hedler Fresnel lens only. After replacing the Fresnel lens tighten its securing screws hand-tight. Attach the front plate at the housing and tighten the front plates four securing screws. Please, before taking the HEDLER HF65 in operation, make sure that the front plate is mounted correctly!

FOCUSING the HEDLER HF65

To focus the HEDLER HF65s light beam turn the focusing knob anti clock-wise (increased floodlight characteristic) or clock-wise (increased spotlight characteristic) to adjust the light beams size.

ACCESSORIES

It is recommended to use light units of the Hedler range only in combination with an original HEDLER 4-Leaf barndoor or one of the HEDLER accessory reflectors. This permits adjusting the light beam to the requirements of any situation. In addition to the reflectors MaxiNorm, MaxiSun, MaxiBrite, MaxiBeauty and MaxiBackground or the MaxiSoft folding reflectors (=softboxes) 30 x 30cm, 50 x 50cm, 70 x 70cm, 90 x 90cm, L110 x 45cm and Octagon 100cm, a 4-Leaf barndoor, reflex umbrellas and grids for several softboxes/reflectors are available. Additionally, the MaxiSpot 65 and MaxiSpot 130 are available for effect lighting.

HEDLER WARRANTY

All Hedler equipment is fully guaranteed against any material or manufacturing defects for three years after date of purchase. Parts made out of glass, fuses, halogen bulbs, flash tubes, Pyrex® coverings and single cell LED modules are not covered by this warranty.

MAINTENANCE and REPAIR

For a secure operation of light units they have to be maintained. Therefore: before using light units they have to be checked visually and an electrical safety check has to be done every twelve month. The results of this check have to be documented and archived. If repair is required, please, contact your dealer, the authorized distributor in your country or the Hedler factory directly. Please note, that a pre-dismantled light unit could cause increased repair costs.

CHECK

All HEDLER light units are tested at HEDLER Systemlicht GmbH according to DIN 0701/0702 with protocol I.

Safety instructions for Hedler light units and accessories

The following safety instructions are valid for Hedler light units and their accessory. Please, read these safety instructions completely before setting up a Hedler light unit and/or putting Hedler light unit(s) into operation. Please contact Hedler Systemlicht GmbH, 65594 Runkel directly, if you do have a technical question concerning Hedler light units and/or Hedler accessories. Please keep these safety instructions close in reach, if necessary you can download them from our website www.hedler.com as a PDF.

Hedler light unit(s), Hedler reflectors, softboxes, reflex umbrellas and/or Hedler accessories are designed for professional studio or indoor use only. Never use Hedler light unit(s), Hedler reflectors, softboxes, reflex umbrellas and/or Hedler accessories outdoors.

Setting up and putting into operation

To put Hedler light unit(s) into operation it/they have to be set up, mounted, placed, secured and monitored appropriately.

- Always use a Hedler light unit in combination with a steady and secure standing light stand which has a loading capacity that is adequate for the weight of the light unit plus cable plus accessory/accessories. Always work within the light stand's loading capacity, especially if you are using, or plan to use, large and/or heavy folding reflectors.
- Appropriate action(s) to secure light stand(s) are (for example):
 - - mounting the light stand legs to the (stage) floor,
 - - weight down the light stand legs with appropriate filled sand bags for example,
 - - blockade the light stand area.
- Please note the permitted tilting of the Hedler light unit(s) of max. 45° upwards and max. 45° downwards.
- Set up a Hedler light unit - light stand combination on leveled floor only. Please make sure for tilt resistance while setting up / taking down and while in operation. Please make sure for an antislip stand while setting up / taking down and while in operation.
- For light unit(s) in operation the ambient temperature should not underrun -15°C (5°F) or exceed approx. 35°C (95°F).
- Acclimatisation: Avoid condensation problems because of high variations of temperature. If there are high variations of temperature do not use the Hedler light unit(s).
- Use Hedler light unit(s) in hospital(s), museum(s), factory (factories) asf. with permission of the appropriate / responsible public authority, administration, company management or business management only.
- If not taking care of this safety instructions there is in particular a serious risk of squeezing, cutting and/or burning caused by overthrowing, slipping or other reason(s) because of uncontrolled/unwanted movements of a light unit(s) while setting up / taking down and/or while in operation.
- Always use a double securing like a safety wire, if you mount a Hedler light unit overhead, which has a loading capacity that it could be loaded with the weight of the mounted light unit incl. accessory multiplied by five (for example: (light unit 4.5 kg + reflector 1.2 kg) * 5 = 28.5 kg - for this case the safety wire to use must have a loading capacity of minimum 28.5 kg).
- Before putting a Hedler light unit into operation check all safety and/or positioning and/or light stand screws for being screwed in securely and/or hand-tight.
- Always keep a minimum distance of 100 cm between the safety glass (or accessories) and any combustible materials and/or any inflammable liquids, gases or explosives when a Hedler light unit is in use.
- Never use a Hedler light unit near any inflammable liquids, gases, materials or explosives that may be ignited by heat or spark.
- If you light through glass surfaces, windows and decoration surfaces keep appropriate distances between the light unit(s) and these materials, because these materials can burst if overheated and shatter could be a risk of injuries.
- Never store any combustible material(s) and/or any inflammable liquids, gases or explosives near any Hedler light unit(s).
- Never touch a Hedler light unit with wet hand and/or feet.
- Never use a Hedler light unit in extremely dusty nor in exceptionally humid and/or wet conditions.
- Never obstruct the forced air cooling (intakes or exhausts) in any way when the Hedler light unit is in use.
- Never obstruct the cooling intakes or exhausts in any way when the Hedler light unit is in use.
- Under no circumstances - do not block the cooling fan of a Hedler light unit.

- Never obstruct any opening of the housing of a Hedler light unit. Never stick any item(s) into any opening of the housing of a Hedler light unit. Otherwise there is the serious risk of an electrical shock, of a failure malfunction of the Hedler light unit, a short-circuit and/or a fire.
- Never carry a Hedler light unit by its power cord and/or its accessories.
- Always avoid the risk of a trip hazard caused by the power cord(s). If power cord(s) has/have to be layed down to the floor to connect the light unit(s) to the power supply: if possible do not so without appropriate marking or covering of the power cord(s).
- Always take care not to squeeze, to overrun, to stretch and/or to buckle the power cord of the Hedler light unit.
- Always take care that the power cord of a Hedler light unit is not worn out and/or is damaged in any way.
- Always take care not to cause a damage of the power cord of a Hedler light unit because of thermic, mechanical and/or chemical reason(s). Avoid such a risk under any circumstances.
- Never use a Hedler light unit with a defective power cord and/or plug. Replacement of a defective power cord has to be done by Hedler Systemlicht GmbH or an authorized specialist shop only. Never use a Hedler light unit with a „repaired“ power cord. A defective power cord must be replaced.
- Some of the Hedler continuous light units do have a high power consumption. Always take care, that the power supply is designed for such a high power consumption.
- Before use check your Hedler product for possible damage(s):

Component:	possible damage(s):
housing, lens, safety glass	crack, split, deformation
power cord	deformation, isolation damage, charred
power plug, mains plug	deformation, broken, charred
bracket and handle	not tightend, sliding block broken, brake disc doesn't work (correctly)

Operation

- Never use a Hedler light unit with a defective safety glass, a defective Pyrex® cover, a defective flash bulb, defective bulb(s) and/or defective fuse(s).
- Never put a Hedler light unit into operation with a defective safety glass, a defective Pyrex® cover, a defective flash bulb, defective bulb(s) and/or defective fuse(s).
- Under any circumstances keep the minimum safety distance(s) given on the identification plate and / or the safety label to avoid damages caused by light beam(s) and / or thermal radiation and / or heat radiation to person(s), animal(s) and / or item(s) and / or object(s).
- In the case of a defect or damage of the safety glass, the Pyrex® cover, the bulb(s), the flash bulb and/or the fuse(s) of a Hedler light unit (particularly while it is in operation): switch of the light unit immediately, disconnect it from the power supply, let it cool down completely and replace the defective safety glass, Pyrex® cover, the bulb(s) and/or fuse(s) with the intended original Hedler spare part. Changing/replacing a flash bulb of a Hedler light unit is not allowed to be done by a customer. Changing/replacing of a flash bulb has to be done by Hedler Systemlicht GmbH only.
- Never use a Hedler light unit unattended.
- Always disconnect Hedler light unit(s) from the power supply if it/they is/are not in use or in operation.
- Hedler light units are not designed and they are not suitable for the use as a room lighting.
- Never use a Hedler light unit for any reason other than photographic or cinematic lighting.
- While in operation avoid to jar heavily, moving jerkily and/or overthrowing Hedler light units - this could cause breaking, fragmenting into parts and/or bursting of the bulb(s) and/or flash bulbs and/or parts made out of glass; because of this there is a serious risk of cutting and/or burning in particular and the risk of damage to property like combustion, discoloring/staining, sparking, and so on.
- In the case of overthrowing, falling down and/or jaring heavily a Hedler light unit it has to be checked by Hedler Systemlicht GmbH or a specialist shop authorized by Hedler Systemlicht GmbH for damages.

Safety glass, Pyrex® cover and flash bulbs, bulbs and fuses

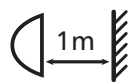
- Before performing any kind of maintenance work on the light unit - always disconnect the Hedler light unit from the power supply and let cool down the light unit completely.

- Before changing a safety glass or a Pyrex® cover - always disconnect the Hedler light unit from the power supply and let cool down the light unit completely.
- Before changing a bulb and/or fuse - always disconnect the Hedler light unit from the power supply and let cool down the light unit completely.
- For replacing a safety glass or Pyrex® cover - use the intended original Hedler spare parts only.
- For replacing a bulb and/or fuse(s) - use the intended original Hedler spare parts only.
- Never use a „repaired“ fuse.
- Changing/replacing a flash bulb of a Hedler light unit is not allowed to be done by a customer. Changing/replacing of a flash bulb has to be done by Hedler Systemlicht GmbH only.

Additional safety instructions and explanation for symbols

- Hedler light units produce a very intensive and bright beam of light: never look directly into the bulb and/or flash bulb. while it is in operation. Never light or flash directly into the eye(s) of a human or an animal, this can cause permanent damage to the eye(s) or health threat(s) (like sunburn).
- Please note, dazzle / glare caused by continuous light unit(s) or flash light unit(s) can cause an immediate (partly and/or temporarily) loss of vision - this can lead to accident(s) (traffic, stairs, and so forth).
- Before (inter-)changing accessories, light modifier(s) or bulb(s) - switch off the light unit(s) and let it cool down completely.
- Some Hedler light units and/or Hedler reflectors, parts of softboxes and reflex umbrellas and some accessories can heat up extremely while in operation: there is a serious risk of burning. Never touch these parts while they are in operation. (Please, use heatresistant and heatprotecting gloves to avoid burning!).
- Please let cool down Hedler light units and/or Hedler reflectors, parts of softboxes and reflex umbrellas and some accessories completely after using them and before packing them away: not doing so can cause serious burnign and/or the risk of sparking.
- Not used as intended and/or in the case of inappropriate use of Hedler light units and/or Hedler reflectors, parts of softboxes and reflex umbrellas and accessories there is the serious risk of a (deadly) electrical shock.
- Hedler light units, Hedler reflectors, softboxes, reflex umbrellas and/or Hedler accessories are no toys, they are unsuitable for use by children. Always keep Hedler light units, Hedler reflectors, softboxes, reflex umbrellas and/or Hedler accessories out of the reach of children.

Explanation for symbols:



Minimum
distance



Heat
°C / °F



Volt /
Voltage



Watt /
Demand



Min. load
capacity



Warning
Voltage



CE



Bin
WEEE

Maintenance

For a secure operation of light units they have to be maintained. Therefore: before using light units they have to be checked visually and an electrical safety check has to be done every twelve month. The results of this check have to be documented and archived.

Liability limitation

For all injuries and/or damages to people and/or objects, which are caused by using Hedler products in a way that the are not intended for the user is liable - not the manufacturer.

If you do have a question to set up and/or to operate Hedler light units, Hedler reflectors, softboxes, reflex umbrellas and/or Hedler accessory, please ask at Hedler Systemlicht GmbH directly or at the Hedler authorized photographic specialised dealer (a list with this dealers you will find on our website www.hedler.com).