



Thank you for choosing a Hedler light unit and your confidence in the Hedler light system. Please, read the following technical informations carefully before using the light unit.

Codes are given in <Brackets>.

TECHNICAL DESCRIPTION

Hedler C-light units are designed for demanding use and offer high, reliable performance. They are hand assembled, applying precision methods. Only first-rate material and parts are used and each light unit is tested individually at the end of the assembly process.

The housing with a 3/8" mounting socket consists of high quality plastic and measures 135 x 130 x 100 mm. The reflector is covered by a protectively rimmed Borofloat™ safety glass, held in place by four thumbscrews, which also serve for attaching accessories. In order to satisfy all requirements of practical application, the HEDLER C 12 silent are offered in different models.

HEDLER C 12 silent

Designed for sound recording, the C 12 silent may be used with either one tungsten halogen bulb of 1000 Watts, 230 Volt or with bulbs of lower ratings - i.e. 150, 300 or 650 Watts, 230-240 Volt. Forced air cooling with thermo safety switch permits continuous operation in any position. A whisper-switch at position 2 for full, at position 1 for reduced, low noise RPM of the forced air cooling can be found at the right side of the housing.

Please note: The forced air cooling of the HEDLER C 12 silent will operate as long as the light unit is connected to the power supply. After switching off the bulb, allow cooling to continue for approx. 5 minutes, so that the light unit may be touched without any hazard. Then disconnect it from the power supply by pulling out the plug.

The HEDLER C 12 silent will be delivered with one C-tilting head with umbrella holder <3021>, variants are available as follows:

HEDLER C 12 silent <3001> with 1000 Watts Tungsten halogen bulb

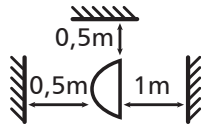
HEDLER C 12 silent <3010> with 1000 Watts Tungsten halogen bulb **incl. Speedring C**
 the HEDLER Speedring C allows use of nearly all Hedler reflectors and folding reflectors with the Hedler C-light units

HEDLER C Light Units Accessories

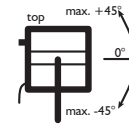
Expand the lighting possibilities of your HEDLER C-light units with original Hedler accessories. With the new Speedring C an adapter is available which allows the use of nearly every reflector of the Uni-Adapt-System with the C-lights: MaxiSoft folding reflectors from 30x30cm up to 90x90 cm, MaxiSoft L 110x45 cm and the very special MaxiSoft Octagon 100 cm - each for soft light. Combine them with the optional grids, stray light will be reduced - and contrast and brilliance improves. Use a greater angle of movement between the folding reflector and the camera - with a grid attached to the main light's folding reflector it's easier to avoid unwanted background lighting. Metal reflectors with their harder light like the MaxiNorm, MaxiSun, MaxiBrite, MaxiBeauty and MaxiBackground are available as well as the MaxiSpot 65 and MaxiSpot 130 for producing head and effect lighting. Besides that, reflex umbrellas, the 4 Leaf Barndoor C with clamps for filter gels are attachable. And for transportation, specific lightweight shock absorbent Lightcases are offered. A great range of tripods and attachment accessories are available additionally.

TECHNICAL DATA C12 silent

Type: C12 silent	Voltage: 230 V ~ 6,3A 50 Hz	Power: max. 1250 W	Fuse: 6,3A
Color: CRI > 97	Kelvin: 3200K	Safety class system: I	Protection category: IP30
Weight: 1200g	Ambient temperature (Ta): -15° - +40° C	Surface temperature: 120°C	
Light stand attachment: 3/8"	Safety glass code: < 4010 >	Light unit code: < 3001 >	



Safety clearance:
Under any circumstances do not under-run the safety clearances given within the graphic to inflammable material!



Position:
Tilt light unit max. 45° upwards/downwards in operation!

SAFETY GLASS and BULBS and FUSES

To replace the safety glass: please, make sure that the housing of the HEDLER C12 silent has cooled off before interchanging the safety glass, otherwise there is a risk of burning! Always disconnect the HEDLER C12 silent from the power supply before interchanging the safety glass. Unscrew the four thumbscrews and remove the safety glass. Replace the safety glass with a new one, put the four thumbscrews into the mounting holes of the safety glass metal rim and tighten the thumbscrews. Please, before taking the HEDLER C12 silent in operation, make sure that the safety glass is mounted correctly and the four thumbscrews are tightened.

For replacing bulb, please, make sure that the housing of the HEDLER C12 silent has cooled off before interchanging the safety glass, otherwise there is a risk of burning! Always disconnect the HEDLER C12 silent from the power supply before interchanging the safety glass. First loosen the four thumbscrews holding the rimmed safety glass and remove the glass. Make sure that the bulb has cooled off, before pulling it upward and out of the socket. Push the new bulb into the socket, observing instructions by the bulb manufacturer. Replace the safety glass and tighten the thumbscrews. Please, before taking the HEDLER C12 silent in operation, make sure that the safety glass is mounted correctly and its thumbscrews are tightened.

For replacing fuse, please, make sure that the housing of the HEDLER C12 silent has cooled off before interchanging the fuse, otherwise there is a risk of burning! Always disconnect the HEDLER C12 silent from the power supply before interchanging the fuse. Use a coin to unscrew the cap of the fuse box, located left of the main switch on the backside of the light housing, by a counter-clockwise turn. Remove the spent fuse and replace it by a new one of the appropriate type.

The HEDLER C12 silent can be equipped with Tungsten halogen bulbs of a different continuous light output power. Within the chart below you will find the information, which Tungsten halogen bulb-appropriate fuse-combination has to be used. Use bulbs with the appropriate fuse only.

Bulbs and Fuses						
Tungsten bulbs	Watts	Volt	Average life / h	Kelvin	Fuse	Code
Bulb-Type < 64502 >	150	230	25	3200	F 2 A	< 1048 >
< 64515 >	300	230	15	3400	F 2 A	< 1048 >
< 64516 >	300	230	75	3200	F 2 A	< 1048 >
< 64540 >	650	230	15	3400	F 4 A	< 1045 >
< 64575 >	1000	230	15	3400	F 6,3 A	< 1039 >
< 64576 >	1000	230	75	3200	F 6,3 A	< 1039 >

HEDLER WARRANTY

All Hedler equipment is fully guaranteed against any material or manufacturing defects for three years after date of purchase. Parts made out of glass, fuses, halogen bulbs, flash tubes, Pyrex® coverings and single cell LED modules are not covered by this warranty.

MAINTENANCE and REPAIR

For a secure operation of light units they have to be maintained. Therefore: before using light units they have to be checked visually and an electrical safety check has to be done every twelve month. The results of this check have to be documented and archived. If repair is required, please, contact your dealer, the authorized distributor in your country or the Hedler factory directly. Please note, that a pre-dismantled light unit could cause increased repair costs.

CHECK

All HEDLER light units are tested at HEDLER Systemlicht GmbH according to DIN 0701/0702 with protocol I.

Safety instructions for Hedler light units and accessories

The following safety instructions are valid for Hedler light units and their accessory. Please, read these safety instructions completely before setting up a Hedler light unit and/or putting Hedler light unit(s) into operation. Please contact Hedler Systemlicht GmbH, 65594 Runkel directly, if you do have a technical question concerning Hedler light units and/or Hedler accessories. Please keep these safety instructions close in reach, if necessary you can download them from our website www.hedler.com as a PDF.

Hedler light unit(s), Hedler reflectors, softboxes, reflex umbrellas and/or Hedler accessories are designed for professional studio or indoor use only. Never use Hedler light unit(s), Hedler reflectors, softboxes, reflex umbrellas and/or Hedler accessories outdoors.

Setting up and putting into operation

To put Hedler light unit(s) into operation it/they have to be set up, mounted, placed, secured and monitored appropriately.

- Always use a Hedler light unit in combination with a steady and secure standing light stand which has a loading capacity that is adequate for the weight of the light unit plus cable plus accessory/accessories. Always work within the light stand's loading capacity, especially if you are using, or plan to use, large and/or heavy folding reflectors.
- Appropriate action(s) to secure light stand(s) are (for example):
 - - mounting the light stand legs to the (stage) floor,
 - - weight down the light stand legs with appropriate filled sand bags for example,
 - - blockade the light stand area.
- Please note the permitted tilting of the Hedler light unit(s) of max. 45° upwards and max. 45° downwards.
- Set up a Hedler light unit - light stand combination on leveled floor only. Please make sure for tilt resistance while setting up / taking down and while in operation. Please make sure for an antislip stand while setting up / taking down and while in operation.
- For light unit(s) in operation the ambient temperature should not underrun -15°C (5°F) or exceed approx. 35°C (95°F).
- Acclimatisation: Avoid condensation problems because of high variations of temperature. If there are high variations of temperature do not use the Hedler light unit(s).
- Use Hedler light unit(s) in hospital(s), museum(s), factory (factories) asf. with permission of the appropriate / responsible public authority, administration, company management or business management only.
- If not taking care of this safety instructions there is in particular a serious risk of squeezing, cutting and/or burning caused by overthrowing, slipping or other reason(s) because of uncontrolled/unwanted movements of a light unit(s) while setting up / taking down and/or while in operation.
- Always use a double securing like a safety wire, if you mount a Hedler light unit overhead, which has a loading capacity that it could be loaded with the weight of the mounted light unit incl. accessory multiplied by five (for example: (light unit 4.5 kg + reflector 1.2 kg) * 5 = 28.5 kg - for this case the safety wire to use must have a loading capacity of minimum 28.5 kg).
- Before putting a Hedler light unit into operation check all safety and/or positioning and/or light stand screws for being screwed in securely and/or hand-tight.
- Always keep a minimum distance of 100 cm between the safety glass (or accessories) and any combustible materials and/or any inflammable liquids, gases or explosives when a Hedler light unit is in use.
- Never use a Hedler light unit near any inflammable liquids, gases, materials or explosives that may be ignited by heat or spark.
- If you light through glass surfaces, windows and decoration surfaces keep appropriate distances between the light unit(s) and these materials, because these materials can burst if overheated and shatter could be a risk of injuries.
- Never store any combustible material(s) and/or any inflammable liquids, gases or explosives near any Hedler light unit(s).
- Never touch a Hedler light unit with wet hand and/or feet.
- Never use a Hedler light unit in extremely dusty nor in exceptionally humid and/or wet conditions.
- Never obstruct the forced air cooling (intakes or exhausts) in any way when the Hedler light unit is in use.
- Never obstruct the cooling intakes or exhausts in any way when the Hedler light unit is in use.
- Under no circumstances - do not block the cooling fan of a Hedler light unit.

- Never obstruct any opening of the housing of a Hedler light unit. Never stick any item(s) into any opening of the housing of a Hedler light unit. Otherwise there is the serious risk of an electrical shock, of a failure malfunction of the Hedler light unit, a short-circuit and/or a fire.
- Never carry a Hedler light unit by its power cord and/or its accessories.
- Always avoid the risk of a trip hazard caused by the power cord(s). If power cord(s) has/have to be layed down to the floor to connect the light unit(s) to the power supply: if possible do not so without appropriate marking or covering of the power cord(s).
- Always take care not to squeeze, to overrun, to stretch and/or to buckle the power cord of the Hedler light unit.
- Always take care that the power cord of a Hedler light unit is not worn out and/or is damaged in any way.
- Always take care not to cause a damage of the power cord of a Hedler light unit because of thermic, mechanical and/or chemical reason(s). Avoid such a risk under any circumstances.
- Never use a Hedler light unit with a defective power cord and/or plug. Replacement of a defective power cord has to be done by Hedler Systemlicht GmbH or an authorized specialist shop only. Never use a Hedler light unit with a „repaired“ power cord. A defective power cord must be replaced.
- Some of the Hedler continuous light units do have a high power consumption. Always take care, that the power supply is designed for such a high power consumption.
- Before use check your Hedler product for possible damage(s):

Component:	possible damage(s):
housing, lens, safety glass	crack, split, deformation
power cord	deformation, isolation damage, charred
power plug, mains plug	deformation, broken, charred
bracket and handle	not tightend, sliding block broken, brake disc doesn't work (correctly)

Operation

- Never use a Hedler light unit with a defective safety glass, a defective Pyrex® cover, a defective flash bulb, defective bulb(s) and/or defective fuse(s).
- Never put a Hedler light unit into operation with a defective safety glass, a defective Pyrex® cover, a defective flash bulb, defective bulb(s) and/or defective fuse(s).
- Under any circumstances keep the minimum safety distance(s) given on the identification plate and / or the safety label to avoid damages caused by light beam(s) and / or thermal radiation and / or heat radiation to person(s), animal(s) and / or item(s) and / or object(s).
- In the case of a defect or damage of the safety glass, the Pyrex® cover, the bulb(s), the flash bulb and/or the fuse(s) of a Hedler light unit (particularly while it is in operation): switch of the light unit immediately, disconnect it from the power supply, let it cool down completely and replace the defective safety glass, Pyrex® cover, the bulb(s) and/or fuse(s) with the intended original Hedler spare part. Changing/replacing a flash bulb of a Hedler light unit is not allowed to be done by a customer. Changing/replacing of a flash bulb has to be done by Hedler Systemlicht GmbH only.
- Never use a Hedler light unit unattended.
- Always disconnect Hedler light unit(s) from the power supply if it/they is/are not in use or in operation.
- Hedler light units are not designed and they are not suitable for the use as a room lighting.
- Never use a Hedler light unit for any reason other than photographic or cinematic lighting.
- While in operation avoid to jar heavily, moving jerkily and/or overthrowing Hedler light units - this could cause breaking, fragmenting into parts and/or bursting of the bulb(s) and/or flash bulbs and/or parts made out of glass; because of this there is a serious risk of cutting and/or burning in particular and the risk of damage to property like combustion, discoloring/staining, sparking, and so on.
- In the case of overthrowing, falling down and/or jaring heavily a Hedler light unit it has to be checked by Hedler Systemlicht GmbH or a specialist shop authorized by Hedler Systemlicht GmbH for damages.

Safety glass, Pyrex® cover and flash bulbs, bulbs and fuses

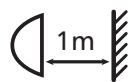
- Before performing any kind of maintenance work on the light unit - always disconnect the Hedler light unit from the power supply and let cool down the light unit completely.

- Before changing a safety glass or a Pyrex® cover - always disconnect the Hedler light unit from the power supply and let cool down the light unit completely.
- Before changing a bulb and/or fuse - always disconnect the Hedler light unit from the power supply and let cool down the light unit completely.
- For replacing a safety glass or Pyrex® cover - use the intended original Hedler spare parts only.
- For replacing a bulb and/or fuse(s) - use the intended original Hedler spare parts only.
- Never use a „repaired“ fuse.
- Changing/replacing a flash bulb of a Hedler light unit is not allowed to be done by a customer. Changing/replacing of a flash bulb has to be done by Hedler Systemlicht GmbH only.

Additional safety instructions and explanation for symbols

- Hedler light units produce a very intensive and bright beam of light: never look directly into the bulb and/or flash bulb. while it is in operation. Never light or flash directly into the eye(s) of a human or an animal, this can cause permanent damage to the eye(s) or health threat(s) (like sunburn).
- Please note, dazzle / glare caused by continuous light unit(s) or flash light unit(s) can cause an immediate (partly and/or temporarily) loss of vision - this can lead to accident(s) (traffic, stairs, and so forth).
- Before (inter-)changing accessories, light modifier(s) or bulb(s) - switch off the light unit(s) and let it cool down completely.
- Some Hedler light units and/or Hedler reflectors, parts of softboxes and reflex umbrellas and some accessories can heat up extremely while in operation: there is a serious risk of burning. Never touch these parts while they are in operation. (Please, use heatresistant and heatprotecting gloves to avoid burning!).
- Please let cool down Hedler light units and/or Hedler reflectors, parts of softboxes and reflex umbrellas and some accessories completely after using them and before packing them away: not doing so can cause serious burnign and/or the risk of sparking.
- Not used as intended and/or in the case of inappropriate use of Hedler light units and/or Hedler reflectors, parts of softboxes and reflex umbrellas and accessories there is the serious risk of a (deadly) electrical shock.
- Hedler light units, Hedler reflectors, softboxes, reflex umbrellas and/or Hedler accessories are no toys, they are unsuitable for use by children. Always keep Hedler light units, Hedler reflectors, softboxes, reflex umbrellas and/or Hedler accessories out of the reach of children.

Explanation for symbols:



Minimum
distance



Heat
°C / °F



Volt /
Voltage



Watt /
Demand



Min. load
capacity



Warning
Voltage



CE



Bin
WEEE

Maintenance

For a secure operation of light units they have to be maintained. Therefore: before using light units they have to be checked visually and an electrical safety check has to be done every twelve month. The results of this check have to be documented and archived.

Liability limitation

For all injuries and/or damages to people and/or objects, which are caused by using Hedler products in a way that the are not intended for the user is liable - not the manufacturer.

If you do have a question to set up and/or to operate Hedler light units, Hedler reflectors, softboxes, reflex umbrellas and/or Hedler accessory, please ask at Hedler Systemlicht GmbH directly or at the Hedler authorized photographic specialised dealer (a list with this dealers you will find on our website www.hedler.com).